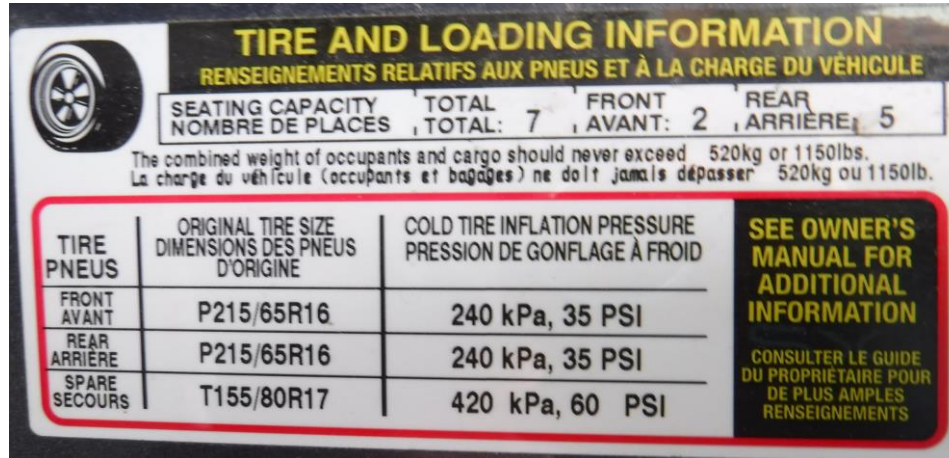


Vehicle presentation

- ❑ Student's name
- ❑ Toyota Sienna 2010
- ❑ 210 387 km (optional)



Recommended tire pressure



TIRE AND LOADING INFORMATION
RENSEIGNEMENTS RELATIFS AUX PNEUS ET À LA CHARGE DU VÉHICULE

SEATING CAPACITY / NOMBRE DE PLACES: TOTAL: 7, FRONT / AVANT: 2, REAR / ARRIÈRE: 5

The combined weight of occupants and cargo should never exceed 520kg or 1150lbs.
La charge du véhicule (occupants et bagages) ne doit jamais dépasser 520kg ou 1150lb.

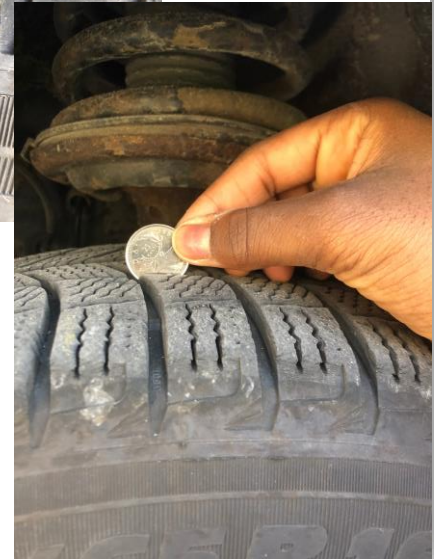
TIRE PNEUS	ORIGINAL TIRE SIZE / DIMENSIONS DES PNEUS D'ORIGINE	COLD TIRE INFLATION PRESSURE / PRESSION DE GONFLAGE À FROID
FRONT / AVANT	P215/65R16	240 kPa, 35 PSI
REAR / ARRIÈRE	P215/65R16	240 kPa, 35 PSI
SPARE / SECOURS	T155/80R17	420 kPa, 60 PSI

SEE OWNER'S MANUAL FOR ADDITIONAL INFORMATION
CONSULTER LE GUIDE DU PROPRIÉTAIRE POUR DE PLUS AMPLES RENSEIGNEMENTS

- Front and rear tires should be inflated to 35 PSI.
- Spare tire should be inflated to 60 PSI.

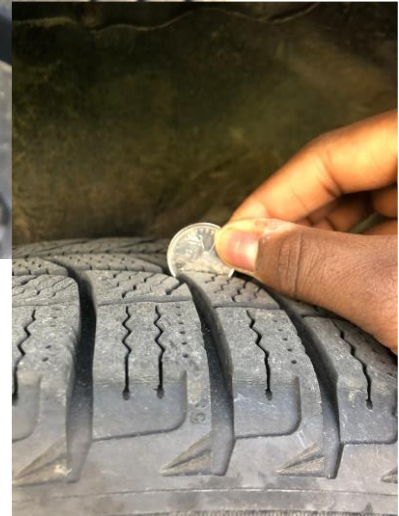
Driver's side front tire inspection

- I observed a few small cracks.
- I observed one or two small rocks in the tires.
- The wear is uniform.
- The tire is still good for one season.



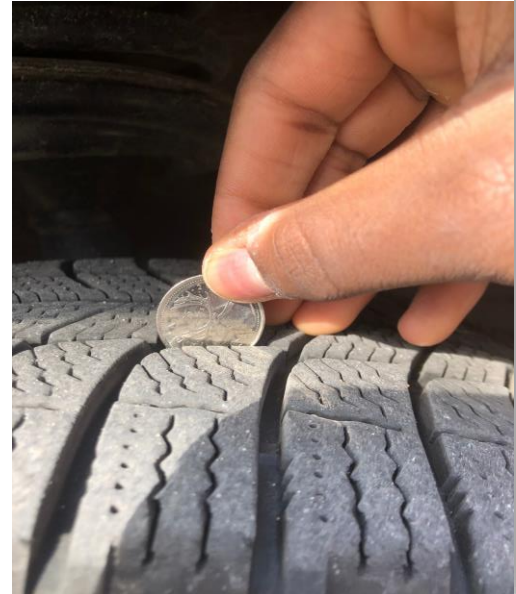
Front passenger tire inspection

- I did not observe any uneven wear.
- I did not observe any cracks in the tire.
- There were about 5 small rocks in the tire.
- The tire is still good for another season.



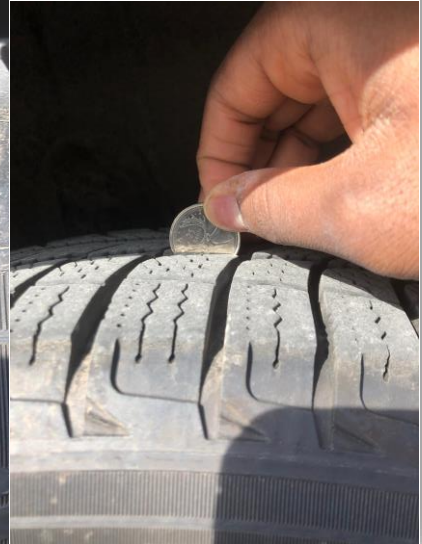
Driver's side rear tire inspection

- I didn't see any uneven wear, but this tire was more worn than the other tires.
- I did not observe any cracks in the tire.
- I did not see any rocks in the tire.
- The tire is still good for another season.



Passenger side rear tire inspection

- I did not notice any uneven wear.
- I did not observe any cracks in the tire.
- There were about 8-10 rocks in the tire.
- It is still good for another season.



Objectivation

Are my parents' tires safe for the next season? Why should tires be inspected regularly?

I think my parents' tires are safe because I didn't really see any cracks, and there weren't really any big rocks. Also, according to my parents, the tires are fairly new. However, I don't have a way to check the tire pressure.

We need to inspect our tires regularly, because it's essential for your safety on the road. It also helps reduce your car's fuel consumption and exhaust emissions. And it makes your tires last longer.